

Ashtons

50 Martins Court YO26 4WS

£1,050 Per Month

2



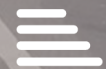
1



1



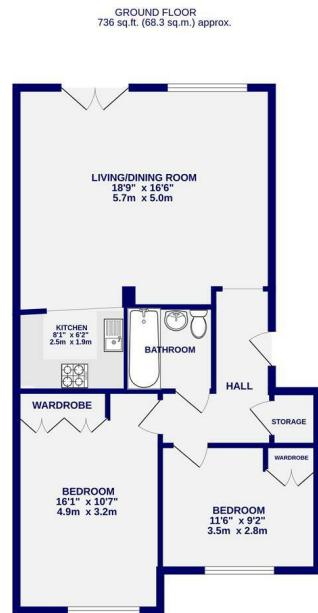
C



A two bedroom ground floor modern apartment situated within easy walking distance of the City Centre and train station. The property is offered for let on a unfurnished basis and comprises; Entrance hall, spacious living room, fitted kitchen with appliances to include an integrated fridge/freezer, electric oven/hob, washer/dryer. Large main double bedroom with fitted modern wardrobes and a second double bedroom with wardrobe. Fully tiled bathroom with shower over the bath. Electric storage heating. Allocated parking.

Available Now.

Deposit: £1150 / 12 Month tenancy / EPC Rating C / Council Tax Band C



TOTAL FLOOR AREA: 736 sq. ft. (68.3 sq. m.) approx.
While every attempt has been made to ensure the accuracy of the floorplan, measurements of rooms and any other areas are approximate. It remains the user's responsibility to verify the dimensions of the property. The user shall be responsible for any error, omission or misstatement. The user shall be responsible for any error, omission or misstatement. The user shall be responsible for any error, omission or misstatement.



Ashtons Lettings

01904 731404

lettings@ashtonsnet.com